

FOR OUR GUESTS

We are glad you chose to worship with us today! We want to make your experience with us as easy and enjoyable as possible. The following information will help you to know what to expect today.

Please take advantage of our children’s programs:

Nursery (ages 0 through 2 yrs.)

A staffed, teaching nursery is located out the auditorium doors to the right.

Jesus’ Farm (Ages 3 yrs. - K)

Jesus Farm is our pre-school program, offered during both hours, to help children know that God loves & cares for us. Every activity is geared to the child’s learning level. It is located out the auditorium doors to the left. Your child may be checked in at the wagon.

rEVOLve (Grades 1 - 5)

rEVOLve is our elementary-age program located in the lower level of the fellowship hall. Bring your child down at 9:00 for Sunday School. Children will head to the lower level and enter a time of worship & an environment to develop a relationship with Jesus Christ through different activities.

The Offering - It is a privilege to give back to God a portion of the material blessings He has given us. Offering boxes are located on the walls at the back of the auditorium or you can give online @ ripleycoc.com.

Communion - We choose to offer the Lords’ Supper each Sunday for all Christians to share. This is done to provide an opportunity to obey Christ to commune “in remembrance” of His death on the cross. Use this quiet time to draw close to the sacrificial Savior. Emblems can be picked up at the table in the foyer.

Decision and Dedication - Times for public responses to God are included in our worship. If you believe that Jesus is the Son of God, has the power to be your Savior, and has the right to be your Lord, this is an invitation for you to come to the front at the invitation song to announce your belief publicly and to

accept Christ by immersion in water (baptism). If you are an immersed believer in Jesus, and desire to be an active member of this body of believers, then come to affirm your faith publicly and express that desire. Responses for rededication and prayer are also encouraged by coming to the front at the invitation song.

If you would like further information about either of these decisions, feel free to schedule an appointment with one of our staff members. Individuals may make these decisions throughout the week and need not take place in the worship service.

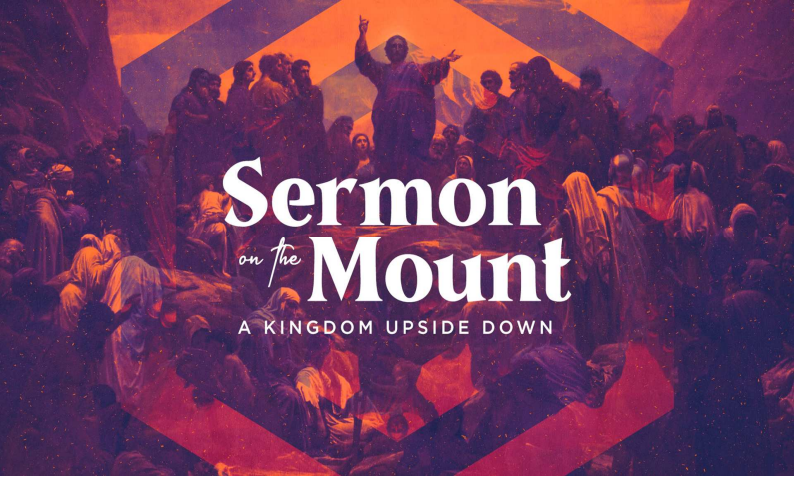
If you need additional information or assistance, please ask an usher or greeter. They are here to assist you.

Ripley Church of Christ

9:00 am Sunday School
10:15 am Worship

Ph. 330-567-2320 www.ripleycoc.com

For more detailed information about our church, service opportunities or ministries, stop by our welcome center or visit us on the web. You’ll find access to sermons, resources, calendar, and more.

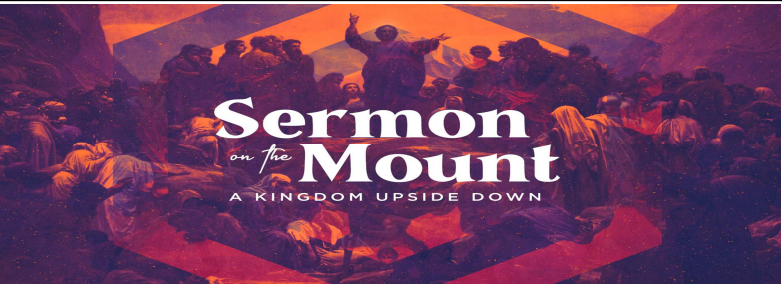


March 19, 2023

Tom Benter
Senior Minister
Mike South
Youth Minister

Jeremiah Stivers
Associate Minister
Ariel Stivers
Children’s Ministry Coordinator

Message Notes



A Kingdom Upside Down
Week 3: How to be a Kingdom Servant

Kingdom Manifesto:

Be a Kingdom _____.

Main Theme: Put _____.
Philippians 2:5-7

Three Things a Kingdom Servant Does:

1. A Kingdom Servant Sees Themselves and Others _____
Matthew 7:1-5

2. A Kingdom Servant _____.
Matthew 7:12, Matthew 22:36-40, Romans 13:8-10

When we love others we are _____ the Law.

Different ways we can love others:

- 1. _____ to them.
- 2. _____ them gently.

3. A Kingdom Servant _____ Those Around Them.

How to influence others:

- 1. _____ life into them.
- 2. Lead them to the _____.
John 8:12, John 12:46



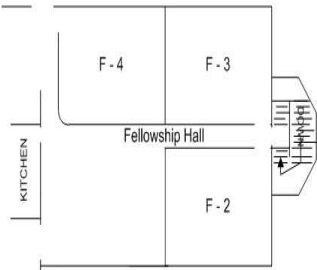
Senior Saints in the Smokies,
May 22-26
Make your reservations now!
Registration is now open. Rip-
ley will be attending week #1,
May 22-26. Brochures are avail-
able at the Registration Station.
Scholarships are available! See
Tom for more information.

This Week

| | | |
|-----------|---------|----------------------------------------|
| Today: | 9:00 a | Sunday School |
| | 10:15 a | Worship |
| | 11:30 a | Brief Deacon Meeting Following Worship |
| | 6:00 p | Launch Youth Group |
| | 6:00 p | Women’s Study |
| Tues: | 6:30 p | American Heritage Girls’ Meeting |
| Wed: | 7:00 p | Men’s Bible Study Fellowship Hall |
| | | Faithful, Fasting Friends |
| Thurs: | 6:00 p | FPU Fellowship Hall |
| | 6:30 p | Romans Bible Study, Conf. Room |
| Fri -Sun: | 9:00 a | Youth Spring Retreat |

ABF Classes / Locations

9:00a
Adult Elective: *Unwrapping Your Spiritual Gift*
F2
Adult Study / *Corinthians* F3
Youth Sunday School, Basement
Women’s Class: *Experiencing Contagious Joy*,
Conf. Room
College / Young Adults , Choir Room
6-8p Sunday Ladies’ Study: *What on Earth*
am I Here For ? Conference Room



Members—Regular Attenders—Guests: Please complete a **Connect Card**, located on the back of the pews, and deposit in the

| | | |
|---------|-------------------|-------------------|
| Mar. 12 | Giving \$5,556.06 | Budget \$7,692.31 |
|---------|-------------------|-------------------|

Events / Misc Information



Youth Spring Retreat- March 24th-26th at Deep Valley Christian Camp in Slippery Rock PA. Open to all students grades 6th-12th. Cost is \$40 due TODAY. We have lots of fun activities planned including the local YMCA. We'll have worship/lesson time and service projects at the camp. See Mike South for registration form. If you can donate 2 doz. cookies for this retreat, please sign the list at the Registration Station or speak to Elaine Firebaugh 330.317.4307. Cookies will need to be in the kitchen by Friday, March 24, 3p. Thank you!

Ladies’ Fellowship will meet Monday, April 10, 6p in the Fellowship Hall. All are welcome. Collecting foam plates, plastic silverware, napkins and Solo cups for H15 Teen Center. Please leave donated items in the Ladies’ Fellowship cupboard in the workroom or bring to the meeting.

Building Use Forms: To assist in the care, upkeep, and usage of our facilities, *all* group leaders / organizers using the facility are to complete a BUF. The form contains instructions on cleaning up, closing down, and securing the building. BUF are available outside the secretary’s office. Completed forms are to be placed in the secretary’s mailbox following the event.

Auditorium Doors - When entering or exiting the auditorium, please do not allow the door to swing freely; slow the door behind you. This will eliminate noise and the potential to hit someone in the hallway.