

FOR OUR GUESTS

We are glad you chose to worship with us today! We want to make your experience with us as easy and enjoyable as possible. The following information will help you to know what to expect today.

Please take advantage of our children's programs:

Nursery (ages 0 through 2 yrs.)

A staffed, teaching nursery is located out the auditorium doors to the right.

Jesus' Farm (Ages 3 yrs. - K)

Jesus Farm is our pre-school program, offered during both hours, to help children know that God loves & cares for us. Every activity is geared to the child's learning level. It is located out the auditorium doors to the left. Your child may be checked in at the wagon.

rEVOLVe (Grades 1 - 5)

rEVOLVe is our elementary-age program located in the lower level of the fellowship hall. Bring your child down at 9:00 for Sunday School. Children will head to the lower level and enter a time of worship & an environment to develop a relationship with Jesus Christ through different activities.

The Offering - It is a privilege to give back to God a portion of the material blessings He has given us. Offering boxes are located on the walls at the back of the auditorium or you can give online @ ripleycoc.com.

Communion - We choose to offer the Lords' Supper each Sunday for all Christians to share. This is done to provide an opportunity to obey Christ to commune "in remembrance" of His death on the cross. Use this quiet time to draw close to the sacrificial Savior. Emblems can be picked up at the table in the foyer.

Decision and Dedication - Times for public responses to God are included in our worship. If you believe that Jesus is the Son of God, has the power to be your Savior, and has the right to be your Lord, this is an invitation for you to come to the front at the invitation song to announce your belief publicly and to

accept Christ by immersion in water (baptism). If you are an immersed believer in Jesus, and desire to be an active member of this body of believers, then come to affirm your faith publicly and express that desire. Responses for rededication and prayer are also encouraged by coming to the front at the invitation song.

If you would like further information about either of these decisions, feel free to schedule an appointment with one of our staff members. Individuals may make these decisions throughout the week and need not take place in the worship service.

If you need additional information or assistance, please ask an usher or greeter. They are here to assist you.

Ripley Church of Christ

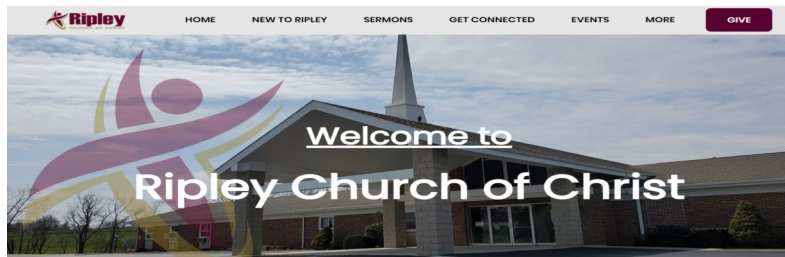
9:00 am Sunday School

10:15 am Worship

Ph. 330-567-2320

www.ripleycoc.com

For more detailed information about our church, service opportunities or ministries, stop by our welcome center or visit us on the web. You'll find access to sermons, resources, calendar, and more.



Zechariah's Song

Dec 4, 2022

Tom Benter
Senior Minister

Jeremiah Stivers
Associate Minister

Mike South
Youth Minister

Ariel Stivers
Children's Ministry Coordinator

Sermon Notes

Zechariah's Song

Heaven and Nature Sing Week 2
 Luke 1:67-79



Zechariah's Song tells us that Jesus came to bring _____ to a _____ world.

Three Ways The Light of the World brings hope into our lives:

1. _____

Redeem means "to set _____ by paying a _____."

God redeemed the Israelites by _____ them out of Egypt.

God redeemed the Israelites by having an ongoing _____ with them.

God redeems us by sending the Messiah to set us _____ from our sins.

2. _____

Not only do we have freedom, but we have _____.

No matter what state or condition we were in before, the Messiah brings us _____.

3. A New _____

Christmas Activies



How it Works:

1. Keep track of all the Christmas expenses you encounter this Christmas season.
2. Give an extra gift this Christmas season that is greater than the average amount you spend on people this year. Gifts can be deposited in the offering boxes (at the back of the auditorium) on December 18 or 25.

Staff Appreciation / Christmas Bonus - You can contribute by identifying on your offering envelope or giving to one of the Elders.



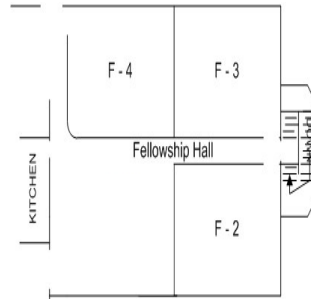
Ripley "Christmas Card Service", our youth will sort and distribute to anyone who *regularly* attends Ripley. Collecting until December 14. Cards will be distributed December 18. Christmas mailbox will be in the Workroom

This Week

Today:	9:00 a	Sunday School
	10:15 a	Worship
	5:00 p	HS Girls' Purity Study
	6:00 p	Ladies' Bible Study
Mon:	6:00 p	Missions' Ministry Meeting
Tues:	6:30 p	AHG Leaders' Meeting
Wed:	7:00 p	Men's Bible Study
Thurs:	6:30 p	Romans Bible Study

ABF Classes / Locations

9:00a
 Adult Study, *Wisdom F3*
 Youth Sunday School, Basement
 Women's Class, *Healing From Brokenness*,
 Conf. Room
 College / Young Adults , Choir Room
6-8p Sunday
 Ladies' Study: *The Book of Ruth*, Conf. Room



Members, Regular Attenders, Guests: Please complete a **Connect Card**, located on the back of the pews, and deposit in the offering boxes each Sunday.

Nov. 27 Giving \$6,438.35 Budget \$7,692.31

Upcoming Events



Pregnancy Care Center Baby Shower - Inviting All Ladies and Girls of Ripley to a shower **Today, Dec 4**, in the fellowship hall immediately following worship, to support the Pregnancy Care Center of Wayne County. Items Needed: Baby Soap, Baby Lotion, Diapers, Sippy Cups, Receiving Blankets, New Fall / Winter Clothing (Premie to 2T), Baby Spoons, Detergent. Other Items: New / Used Baby Furniture, Baby / Toddler Books or Toys. *Bring finger food to share.* Questions? See Teela Young or Elaine Firebaugh

Ladies' Fellowship Christmas Dinner Monday, Dec 12, 6p in the Fellowship Hall. Meat, rolls & drink provided. Please bring a covered dish. Donations being collected for the "Good Deeds" Baskets, to bless 2 church families. Suggestions: personal care items, small snacks & candies, gift cards (Shreve Businesses or gas) Items can be placed in workroom cupboard.

Auditorium Doors - When entering or exiting the auditorium, please do not allow the door to swing freely; slow the door behind you. This will eliminate noise and the potential to hit someone in the hallway.