

## FOR OUR GUESTS

We are glad you chose to worship with us today! We want to make your experience with us as easy and enjoyable as possible. The following information will help you to know what to expect today.

### Please take advantage of our children's programs:

#### Nursery (ages 0 through 2 yrs.)

A staffed, teaching nursery is located out the auditorium doors to the right.

#### Jesus' Farm (Ages \*3 yrs. - K)

Jesus Farm is our pre-school program, offered during both hours, to help children know that God loves & cares for us. Every activity is geared to the child's learning level. It is located out the auditorium doors to the left. Your child may be checked in at the wagon. (\*potty trained)

#### rEVOLVe (Grades 1 - 5)

rEVOLVe is our elementary-age program located in the lower level of the fellowship hall. Bring your child down at 9:00 for Sunday School. Children experience a time of worship & an environment to develop a relationship with Jesus Christ through different activities.

**The Offering** - It is a privilege to give back to God a portion of the material blessings He has given us. Offering boxes are located on the walls at the back of the auditorium, you can give online @ ripleycoc.com, or when the plates are passed.

**Communion** - We choose to offer the Lords' Supper each Sunday for all Christians to share. This is done to provide an opportunity to obey Christ to commune "in remembrance" of His death on the cross. Use this quiet time to draw close to the sacrificial Savior. Emblems will be passed during the service or prepackaged units can be picked up at the table in the foyer.

**Decision and Dedication** - Times for public responses to God are included in our worship. If you believe that Jesus is the Son of God, has the power to be your Savior, and has the right to be your Lord, this is an invitation for you to come to the front at the invitation song to announce your belief publicly and to accept Christ by immersion in water (baptism). If you are an

immersed believer in Jesus, and desire to be an active member of this body of believers, then come to affirm your faith publicly and express that desire. Responses for rededication and prayer are also encouraged by coming to the front at the invitation song.

If you would like further information about either of these decisions, feel free to schedule an appointment with one of our staff members. Individuals may make these decisions throughout the week and need not take place in the worship service.

*If you need additional information or assistance, please ask an usher or greeter. They are here to assist you.*

## Ripley Church of Christ

9:00 am Sunday School

10:15 am Worship

Ph. 330-567-2320

www.ripleycoc.com

For more detailed information about our church, service opportunities or ministries, stop by our welcome center or visit us on the web. You'll find access to sermons, resources, calendar, and more.



*For the word of God is alive and active.  
Sharper than any double-edged sword, it penetrates even to  
dividing soul and spirit, joints and marrow; it judges the  
thoughts and attitudes of the heart.*

—Hebrews 4:12

There is power in scripture. Certain passages have penetrated your heart, soul, and spirit. In this series, we are examining passage favorites that have impacted your life.

What is your life Impacting Passage?

September 15, 2024

**Tom Benter**  
Senior Minister  
**Mike South**  
Student Minister  
**Keri Tipton**  
Office Manager

**Jeremiah Stivers**  
Associate Minister  
**Ariel Stivers**  
Children's Ministry Coordinator  
**Tracy Deeken**  
Custodian

# Message Notes

## Impacting Passages

*Jesus said to the people who believed in him, "You are truly my disciples if you remain faithful to my teachings. And you will know the truth, and the truth will set you free." - John 8:31-32*

The devil is sneaky. He will use the things that God has said and get you to believe half of it. And by believing half of it, you completely changed what the Lord was trying to communicate.

Freedom doesn't come from the fact that there's a truth; freedom comes from \_\_\_\_\_.

### 3 Lies

- \_\_\_\_\_
  - Truth is not \_\_\_\_\_
  - B\_\_\_\_\_ vs T\_\_\_\_\_
  - E\_\_\_\_\_ vs T\_\_\_\_\_
  - Do more than w\_\_\_\_\_
- \_\_\_\_\_
  - Satan: If you k\_\_\_\_\_ you would d\_\_\_\_\_.
  - Jesus: If you d\_\_\_\_\_, you would k\_\_\_\_\_.
- \_\_\_\_\_
  - You can't hold the t\_\_\_\_\_ and the truth at the same t\_\_\_\_\_.
  - T\_\_\_\_\_ becomes your t\_\_\_\_\_.

### 2 Threats

O\_\_\_\_\_ THREAT

R\_\_\_\_\_ - \_\_\_\_\_

*When feelings are embraced over facts, everyone is free to define their own truth as he or she prefers.*

I\_\_\_\_\_ THREAT

*Beware of false prophets who come disguised as harmless sheep but are really vicious wolves. —Matthew 7:15*

- radical p\_\_\_\_\_ theology
- radical p\_\_\_\_\_ theology

*...a time is coming when people will no longer listen to sound and wholesome teaching. They will follow their own desires and will look for teachers who will tell them whatever their itching ears want to hear. They will reject the truth and chase after myths. —2 Timothy 4:3-4*

**2025 Leadership Recommendation Guidelines**— September is the month members can recommend names of individuals to serve as Elder / Deacon. Individuals will be reviewed for selection by the Elders and a list presented to the congregation prior to the November Congregational Meeting (11/17). *Please review the guidelines (packet located at the Connection Center) prior to submitting a name.*

**Parenting Discipleship Workshop**— Ripley is hosting a parent workshop in October where we will equip you with tools and resources for teaching/modeling Christ to your children. Our goal is that you would come away feeling confident and encouraged as you strengthen your skills in discipleship. As we prepare for this workshop, we are asking for parents to share with us what challenges or questions you may have in teaching your child about God. Scan the QR code to take an anonymous survey.



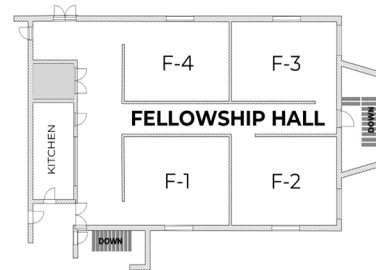
## This Week

Today:	9:00a	Sunday School/Adult Bible Fellowship
	10:15a	Worship
		Jesus' Farm & rEVOLve Children's Program
	6:00p	Launch Youth Group
		Women's Bible Study
Tues:	9:30a	Ladies' Fall Bible Study-Conference Room
	6:30p	AHG Meeting
Thurs:	6:30p	Mixed Small Group Adult Bible Study

### ABF Classes / Locations

**9:00a**  
 Adult Study: *King David* F3  
 Youth Sunday School: Basement  
 Women's Class, Conf. Room  
 College / Young Adults: Choir Room

**6:00 p**  
 Ladies' Bible Study: Conf Rm



**Members—Regular Attenders—Guests:** Please complete a **Connect Card**, located on the back of the pews, and deposit in the offering plates each Sunday.

Sept 8      Giving \$ 7,454.22      Budget \$8,563.00

# Events / Misc



**Holmes County Home Auction**— If you signed up to furnish a pie, please have the pie at RCC on September 20th no later than 12p. Pies should be placed in the Kitchen.

**Pickleball Clinic— September 22, 2p-5p** Learn about the game of Pickleball, lead by Brian and Heidi McClain at RCC. No equipment is required (If you have paddles and balls bring them). Any questions, contact Heidi McClain (330.231.2193).

**Rooted & Launch Ministries Lunch & Bingo— September 29, 12p** Immediately following service in the Fellowship Hall. Lunch is provided. For any questions, contact Elaine Firebaugh 330.317.4307.

**CIY MOVE 2025 Interest Meeting— September 22** Immediately following service we will have a quick meeting for current 8<sup>th</sup>-12<sup>th</sup> grade student interested in attending Christ in Youth conference on July 7th-12th, 2025, in Wheaton, Illinois. Contact Mike South with questions 251.644.0498 or [mike.south@ripleycoc.com](mailto:mike.south@ripleycoc.com).

**Seniors' Day at the Lake— October 8** Age 55+ can join us at Round Lake for day of fellowship, learning, and food. Those wanting a ride, we will be leave the church at 9am (meet at Round Lake at 9:30am). Sign up for this event at the Connection Center.

**2024 College Tour Road Trip— October 17-19** Open to all high school students. We are touring KCU, Johnson University and Louisville Bible College. *Register by September 29th.* Contact Mike South for details 251.644.0498 or [mike.south@ripleycoc.com](mailto:mike.south@ripleycoc.com).



**Chili/Soup Cook-off— October 13** Immediately following service. Prizes for best chili and best soup! Please bring either a chili, soup, or dessert to share. Sign up at the Connection Center.

