

FOR OUR GUESTS

We are glad you chose to worship with us today! We want to make your experience with us as easy and enjoyable as possible. The following information will help you to know what to expect today.

Please take advantage of our children's programs:

Nursery (ages 0 through 2 yrs.)

A staffed, teaching nursery is located out the auditorium doors to the right.

Jesus' Farm (Ages 3 yrs. - K)

Jesus Farm is our pre-school program, offered during both hours, to help children know that God loves & cares for us. Every activity is geared to the child's learning level. It is located out the auditorium doors to the left. Your child may be checked in at the wagon.

rEVOLVe (Grades 1 - 5)

rEVOLVe is our elementary-age program located in the lower level of the fellowship hall. Bring your child down at 9:00 for Sunday School. Children will head to the lower level and enter a time of worship & an environment to develop a relationship with Jesus Christ through different activities.

The Offering - It is a privilege to give back to God a portion of the material blessings He has given us. Offering boxes are located on the walls at the back of the auditorium or you can give online @ ripleycoc.com.

Communion - We choose to offer the Lords' Supper each Sunday for all Christians to share. This is done to provide an opportunity to obey Christ to commune "in remembrance" of His death on the cross. Use this quiet time to draw close to the sacrificial Savior. Emblems can be picked up at the table in the foyer.

Decision and Dedication - Times for public responses to God are included in our worship. If you believe that Jesus is the Son of God, has the power to be your Savior, and has the right to be your Lord, this is an invitation for you to come to the front at the invitation song to announce your belief publicly and to

accept Christ by immersion in water (baptism). If you are an immersed believer in Jesus, and desire to be an active member of this body of believers, then come to affirm your faith publicly and express that desire. Responses for rededication and prayer are also encouraged by coming to the front at the invitation song.

If you would like further information about either of these decisions, feel free to schedule an appointment with one of our staff members. Individuals may make these decisions throughout the week and need not take place in the worship service.

If you need additional information or assistance, please ask an usher or greeter. They are here to assist you.

Ripley Church of Christ

9:00 am Sunday School

10:15 am Worship

Ph. 330-567-2320

www.ripleycoc.com

For more detailed information about our church, service opportunities or ministries, stop by our welcome center or visit us on the web. You'll find access to sermons, resources, calendar, and more.



CONGRATULATIONS

May 21, 2023

Tom Benter
Senior Minister
Mike South
Youth Minister

Jeremiah Stivers
Associate Minister
Ariel Stivers
Children's Ministry Coordinator

Message Notes

Abide in Him

⁴ Abide in me, and I in you. As the branch cannot bear fruit by itself, unless it abides in the vine, neither can you, unless you abide in me. ⁵ I am the vine; you are the branches. Whoever abides in me and I in him, he it is that bears much fruit, for apart from me you can do nothing. ⁶ If anyone does not abide in me he is thrown away like a branch and withers; and the branches are gathered, thrown into the fire, and burned. ⁷ If you abide in me, and my words abide in you, ask whatever you wish, and it will be done for you. ⁸ By this my Father is glorified, that you bear much fruit and so prove to be my disciples. ⁹ As the Father has loved me, so have I loved you. Abide in my love. ¹⁰ If you keep my commandments, you will abide in my love, just as I have kept my Father's commandments and abide in his love. ¹¹ These things I have spoken to you, that my joy may be in you, and that your joy may be full.

John 15:4-11 ESV

1. What Does it Mean to Abide in Jesus?
Having a _____, _____, _____, and _____ relationship with Him!
2. How do we Abide in Him and His Love?
 - _____ with Him
 - In _____
 - In _____
3. What Happens When we Abide in Jesus?
 - You Will _____
 - You Will _____

Please collect your belongings! At the end of May, we will donate anything hanging in the office hallway to Love INC or Save and Serve.

The Food Drive for the AICM Mission Trip is Ongoing. We are collecting food until leaving for the trip June 24. Food can be placed on the table by the front door.

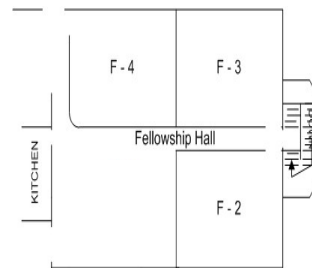
New Lending Library forming for Ripley. You can donate Christian books, (fiction, non fiction) that can be enjoyed by others. Place them in the Conference Room near the windows. *All books donated will become property of RCC.* Questions? See or contact Debbi Miller at 330.231.0378.

This Week

Today:	9:00 a	Sunday School
	10:15 a	Worship
	11:30 a	Launch Sm Grp Outing for Sr & Jr High Guys
	11:30 a	Launch Sm Grp Outing for High School Girls
	6:00 p	Launch Youth Group
Mon-Sat.		Senior Saints' Trip
Wed:	7:00 p	Men's Bible Study, Fellowship Hall
Thurs:	3-6:00 p	WIC Community Outreach, Conf. Rm
	6:30 p	Bible Study, Conf. Room

ABF Classes / Locations

9:00a
 Adult Study / Job F3
 Youth Sunday School, Basement
 Women's Class: Experiencing Contagious Joy, Conf. Room
 College / Young Adults, Choir Room
6-8p Sunday Ladies' Study: *What the Women Saw*, Conf. Room



Members—Regular Attenders—Guests: Please complete a **Connect Card**, located on the back of the pews, and deposit in the offering plates each Sunday.

May 14 Giving \$9,132.79 Budget \$7,692.31

Events / Misc Information

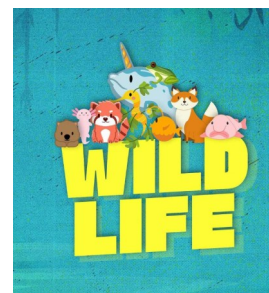
Congratulations Graduates!!!

We will be recognizing those attenders of RCC who are graduating from High School / College as part of 10:15a service.

Women's 6-8p Sunday Night Bible Study, begins Today using *What the Women Saw*, (Right Now Media)

Ladies' Fellowship will meet Monday, June 12, at 6p in the Fellowship Hall. All Ladies welcome.

Collecting items for the shoeboxes-notebooks, coloring books, bar soap, toothbrushes, colored pencils, pencils, erasers, pencil sharpeners. Items can be put in the cupboard in the workroom.



2023 VBS - Wild Life

Calling all wildlife experts! Ripley is excited to bring Wildlife VBS to you! Save the date: June 14-16, from 9:00-11:30AM. Friday, June 16 will also have a provided lunch with



Register Here!

fun & games to follow until 2:00PM. You can register your children using this QR code or at www.ripleycoc.com. We are always looking for volunteers as well, so sign up at the Registration Station or contact Ariel Stivers at 239.216.6013. Let's go WILD!

D3 Summer High School Bible Study, Monday nights in June, July & August 6:30-8p. HS students grab your Bible and join us as we "Dig Down Deep" into the Book of James! We will meet at the Prost residence, 5778 Force Road, Shreve.

Church-wide Rubber Ducks baseball game: Sunday, July 23. Game starts at 2p, tickets are \$12 each and can be purchased at <https://fevogm.com/event/Ripleychurch>. Questions? See Mike South.

Offering / Communion Servers - Thank you for your assistance in serving in worship today. Please **wait** till the conclusion of the Invitation Song before exiting your seat / auditorium.