

FOR OUR GUESTS

We are glad you chose to worship with us today! We want to make your experience with us as easy and enjoyable as possible. The following information will help you to know what to expect today.

Please take advantage of our children's programs:

Nursery (ages 0 through 2 yrs.)

A staffed, teaching nursery is located out the auditorium doors to the right.

Jesus' Farm (Ages *3 yrs. - K)

Jesus Farm is our pre-school program, offered during both hours, to help children know that God loves & cares for us. Every activity is geared to the child's learning level. It is located out the auditorium doors to the left. Your child may be checked in at the wagon. (*potty trained)

rEVOLVe (Grades 1 - 5)

rEVOLVe is our elementary-age program located in the lower level of the fellowship hall. Bring your child down at 9:00 for Sunday School. Children experience a time of worship & an environment to develop a relationship with Jesus Christ through different activities.

The Offering - It is a privilege to give back to God a portion of the material blessings He has given us. Offering boxes are located on the walls at the back of the auditorium, you can give online @ ripleycoc.com, or when the plates are passed.

Communion - We choose to offer the Lords' Supper each Sunday for all Christians to share. This is done to provide an opportunity to obey Christ to commune "in remembrance" of His death on the cross. Use this quiet time to draw close to the sacrificial Savior. Emblems will be passed during the service or prepackaged units can be picked up at the table in the foyer.

Decision and Dedication - Times for public responses to God are included in our worship. If you believe that Jesus is the Son of God, has the power to be your Savior, and has the right to be your Lord, this is an invitation for you to come to the front at the invitation song to announce your belief publicly and to accept Christ by immersion in water (baptism). If you are an

immersed believer in Jesus, and desire to be an active member of this body of believers, then come to affirm your faith publicly and express that desire. Responses for rededication and prayer are also encouraged by coming to the front at the invitation song.

If you would like further information about either of these decisions, feel free to schedule an appointment with one of our staff members. Individuals may make these decisions throughout the week and need not take place in the worship service.

If you need additional information or assistance, please ask an usher or greeter. They are here to assist you.



Ripley Church of Christ

9:00 am Sunday School
10:15 am Worship

Ph. 330-567-2320 www.ripleycoc.com

For more detailed information about our church, service opportunities or ministries, stop by our welcome center or visit us on the web. You'll find access to sermons, resources, calendar, and more.



August 10, 2025

Tom Benter
Senior Minister
Mike South
Student Minister
Keri Tipton
Office Manager

Jeremiah Stivers
Associate Minister
Ariel Stivers
Children's Ministry Coordinator
Tracy Deeken
Custodian

Message Notes

Yes You: Fulfilling God's Purpose

1 Samuel 16-17


God can use you despite other people's

When you free yourself from the burden of pleasing everyone, you open doors to in ways you never imagined.

How to value God's opinion:


- 1. Remember we judge by , God judges off our .
- 2. Be who God you to be.
 - If you are constantly trying to live up to someone's expectations, you are living not yours.
- 3. Opinions may be valid, but God can still use you if you have a heart.

All Church Picnic—August 17 After services. Church will provide hamburgers, hotdogs, drinks, and table service. Those whose last name starts with A-M bring a side dish to share, N-Z bring a dessert to share! Stick around for some 9 square, volleyball, slip n slide, and of course a repeat of last year's Apple Pie eating contest! Fill out an RSVP card located in the Connection Center and drop them in the offering plates or offering box to let us know how many will be attending. Hope to see you there!



Church Picnic

Aug 17 12pm- 3pm



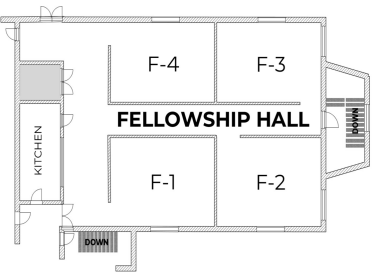
'We the Kingdom' Concert Tickets Have Arrived— Tickets may be picked up Sunday mornings or throughout the week. Payment is due when you pick up your tickets. Contact Keri to make arrangements by calling or texting 330-541-1661.

This Week

Today:	9:00a	Sunday School/Adult Bible Fellowship
	10:15a	Worship
		Jesus' Farm & rEVOLve Children's Programs
	6:00p	Launch Youth Group
	6:00p	Ladies' Bible Study
Wed:	7:00p	Men's Bible Study
Thurs:	6:30p	Mixed Small Group Adult Bible Study

ABF Classes / Locations

9:00a
Adult Study: Names of God F3
Youth Sunday School: Basement
Women's Class:, Conf. Room
College / Young Adults: Choir Room
6:00 p
Ladies' Bible Study: Conf Rm



Members—Regular Attenders—Guests: Complete a Connect Card, located on the back of the pews, and deposit in the offering plates each Sunday.

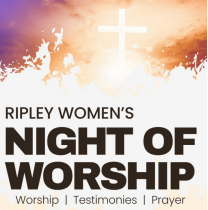
July 27	Giving \$9,310.54	Budget \$8,563.00
Aug 3	Giving \$9,766.51	Budget \$8,563.00

Events / Misc

Ladies' Fellowship—August 11, 6p Join us in the Fellowship Hall. We are packing shoeboxes for Operation Christmas Child. Small toys are still needed. Place any donations in the cupboard in the Connection Center.

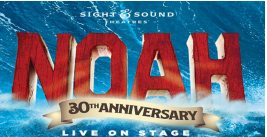
Love Out Loud Fundraiser—August 23, 5p Come to Nashville Church of Christ for an evening of BBQ and Bluegrass music, all in support of Love INC. All donations go directly to Love INC of Greater Holmes County.

Tuesday Morning Ladies' Bible Study—September 16, 9am We are meeting every other week in the Conference Room studying the book of James. Workbooks are available at no cost. Contact Sandy Smith to sign up or if you have any questions 330-465-6991 or email marvinsandy@aol.com.



RIPLEY WOMEN'S NIGHT OF WORSHIP
Worship | Testimonies | Prayer

nect with other women in Christ for a night of worship, prayer, and fellowship. Come share in song, hear inspiring testimonies, and be strengthened by our shared faith. Bring one dozen of your favorite cookies to share in a cookie social after the event.



SIGHT & SOUND THEATER
NOAH
30th ANNIVERSARY
LIVE ON STAGE

Sight & Sound Theater; Noah—Adult Trip December 1-2 We have available 10 7 remaining tickets and hotel reservations. Specific information and sign up is available at the Connection Center counter.

Please Collect Your Belongings— There are several coats hanging at the end of the office hallway. Unclaimed items will be donated if not claimed by 8/10/25.