

FOR OUR GUESTS

We are glad you chose to worship with us today! We want to make your experience with us as easy and enjoyable as possible. The following information will help you to know what to expect today.

Please take advantage of our children's programs:

Nursery (ages 0 through 2 yrs.)

A staffed, teaching nursery is located out the auditorium doors to the right.

Jesus' Farm (Ages 3 yrs. - K)

Jesus Farm is our pre-school program, offered during both hours, to help children know that God loves & cares for us. Every activity is geared to the child's learning level. It is located out the auditorium doors to the left. Your child may be checked in at the wagon.

rEVOLVe (Grades 1 - 5)

rEVOLVe is our elementary-age program located in the lower level of the fellowship hall. Bring your child down at 9:00 for Sunday School. Children will head to the lower level and enter a time of worship & an environment to develop a relationship with Jesus Christ through different activities.

The Offering - It is a privilege to give back to God a portion of the material blessings He has given us. Offering boxes are located on the walls at the back of the auditorium or you can give online @ ripleycoc.com.

Communion - We choose to offer the Lords' Supper each Sunday for all Christians to share. This is done to provide an opportunity to obey Christ to commune "in remembrance" of His death on the cross. Use this quiet time to draw close to the sacrificial Savior. Emblems can be picked up at the table in the foyer.

Decision and Dedication - Times for public responses to God are included in our worship. If you believe that Jesus is the Son of God, has the power to be your Savior, and has the right to be your Lord, this is an invitation for you to come to the front at the invitation song to announce your belief publicly and to

accept Christ by immersion in water (baptism). If you are an immersed believer in Jesus, and desire to be an active member of this body of believers, then come to affirm your faith publicly and express that desire. Responses for rededication and prayer are also encouraged by coming to the front at the invitation song.

If you would like further information about either of these decisions, feel free to schedule an appointment with one of our staff members. Individuals may make these decisions throughout the week and need not take place in the worship service.

If you need additional information or assistance, please ask an usher or greeter. They are here to assist you.

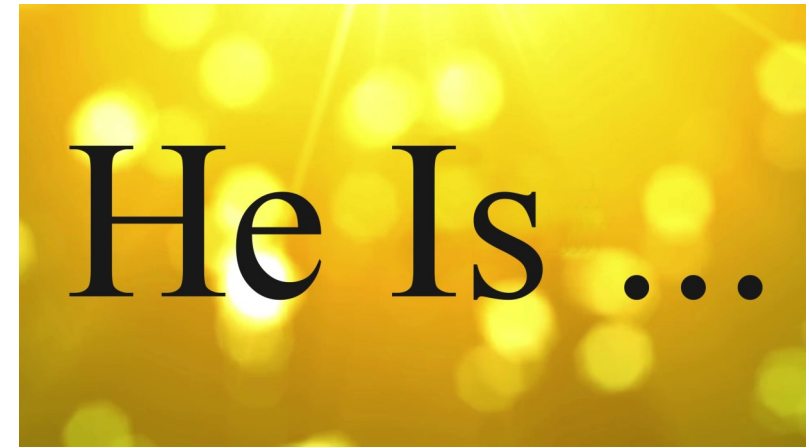
Ripley Church of Christ

9:00 am Sunday School
10:15 am Worship

Ph. 330-567-2320

www.ripleycoc.com

For more detailed information about our church, service opportunities or ministries, stop by our welcome center or visit us on the web. You'll find access to sermons, resources, calendar, and more.



What we believe about God affects how we live, how we view ourselves and others, and even how we respond to trials we face in life. Our beliefs about God also affect our relationship with Him. It's important to have a healthy view of God—one that is based not on our feelings or opinion but on the truth of His Word.

September 17, 2023

Tom Benter
Senior Minister
Mike South
Youth Minister

Jeremiah Stivers
Associate Minister
Ariel Stivers
Children's Ministry Coordinator

Message Notes

He is... Holy

We want to consider one more attribute of God as we wrap up this series. While some would say it's the least popular, some theologians would say it's the most important.

When you experience this attribute of God, it may shake you. It'll likely stir you. You may honestly drop to your knees in repentance. You may fall on your face in worship.

In the year that King Uzziah died, I saw the Lord, high and exalted, seated on a throne; and the train of his robe filled the temple. Above him were seraphim, each with six wings: With two wings they covered their faces, with two they covered their feet, and with two they were flying. And they were calling to one another: "Holy, holy, holy is the Lord Almighty; the whole earth is full of his glory." At the sound of their voices the doorposts and thresholds shook and the temple was filled with smoke. - Isaiah 6:1-4

'seraphim' - _____

Hebrew: 'q_____'



'Holy' - _____

Then I said, "It's all over! I am doomed, for I am a sinful man. I have filthy lips, and I live among a people with filthy lips." - Isaiah 6:5

He c_____ his own s_____

When you are in the presence of God, you are not worried about t_____ sin, you are just aware of your _____ sin.

God i_____ the f_____

God showed his great love for us by sending Christ to die for us while we were still sinners. - Romans 5:8

There is nothing you can do to make Him l_____ you m_____, and there's nothing you can do to make Him l_____ you l_____.

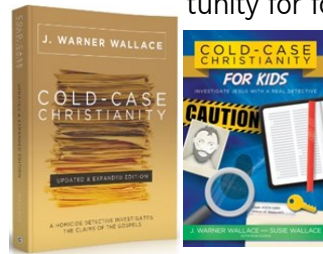
Then I heard the Lord asking, "Whom should I send as a messenger to this people? Who will go for us?" I said, "_____." - Isaiah 6:8

CONCLUSION

With every bone in my body I will praise him: "Lord, who can compare with you? Who else rescues the helpless from the strong? Who else protects the helpless and poor from those who rob them?" - Psalm 35:10

Elective Sunday School Class: Cold Case Christianity by J. Warner Wallace.

Available 10/1-11/26. This is a GREAT opportunity for families to learn similar concepts on how to defend your faith. Adults: Matt Muzic, Fellowship Hall, High School; Youth Sunday School Room, 4-8TH Grade, Ariel Stivers, 1-3rd Grade Melissa Daugherty. Sign up at the Connection Center.

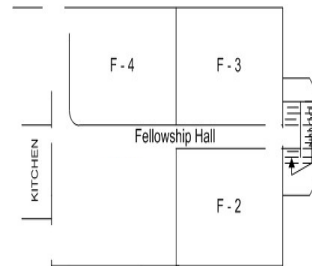


This Week

- | | | |
|--------|---------|--|
| Today: | 9:00 a | Sunday School |
| | 10:15 a | Worship |
| | 4:30 p | Be Bold Youth Night Of Worship |
| | 6:00 p | Ladies' Bible Study <i>Colossians</i> |
| Tue: | 6:30 p | American Heritage Girls |
| Wed: | 7:00 p | Men's Bible Study |
| | | Faithful, Fasting, Friends Bible Study |
| Thu: | 2:00 p | Visitation Team conference call |
| | 6:30 p | Small Group Bible Study |

ABF Classes / Locations

- 9:00a**
 Adult Study / 2 Corinthians F3
 Youth Sunday School, Basement
 Women's Class: *In the Eye of the Storm*, Max Lucado, Conf. Room
 College / Young Adults, Choir Room



Members—Regular Attenders—Guests: Please complete a **Connect Card**, located on the back of the pews, and deposit in the offering plates each Sunday.

Sep. 10 Giving \$8,609.70 Budget \$7,692.31

Events / Misc Information

Sunday Night Women's Group 6:00p Conference Room. The Book of Colossians by Louie Giglio. All women welcome!

Faithful Fasting Friends Sep 27 (7-8p) for eight weeks (ending date for the 8 weeks will be Nov 15)

Addresses for the Military & College Students Needed ASAP for Ladies' Fellowship. Please leave in secretary's mailbox.

2024 Leadership recommendation packets are available at the Connection Center, across from the nursery.



Fall Sermon Series

Sometimes life can be overwhelming, sometimes we get stuck in a rut, and sometimes we just don't know what to do in certain situations. We will examine four struggles in life and see that through Christ there is A Better Way!


A One Night Free Event

FAMILY FOR LIFE

Building Better Families for a lifetime

September 24th | 6-8 pm

Join us for this simulcast event!
 Childcare provided
 Please register for childcare
 330-567-2320



With
Dave and Ann Wilson



Revolve—September 24 6-8 pm (Grades 1-5)

This event will be sponsored by the RCC Launch youth group, and provide children's programs during the Family for Life simulcast. **See info above*

Offering / Communion Servers - Thank you for your assistance in serving in worship today. Please **wait** till the conclusion of the Invitation Song before exiting your seat / auditorium.