

## FOR OUR GUESTS

---

We are glad you chose to worship with us today! We want to make your experience with us as easy and enjoyable as possible. The following information will help you to know what to expect today.

### Please take advantage of our children's programs:

#### Nursery (ages 0 through 2 yrs.)

A staffed, teaching nursery is located out the auditorium doors to the right.

#### Jesus' Farm (Ages \*3 yrs. - K)

Jesus Farm is our pre-school program, offered during both hours, to help children know that God loves & cares for us. Every activity is geared to the child's learning level. It is located out the auditorium doors to the left. Your child may be checked in at the wagon. (\*potty trained)

#### rEVOLve (Grades 1 - 5)

rEVOLve is our elementary-age program located in the lower level of the fellowship hall. Bring your child down at 9:00 for Sunday School. Children experience a time of worship & an environment to develop a relationship with Jesus Christ through different activities.

**The Offering** - It is a privilege to give back to God a portion of the material blessings He has given us. Offering boxes are located on the walls at the back of the auditorium, you can give online @ [ripleycoc.com](http://ripleycoc.com), or when the plates are passed.

**Communion** - We choose to offer the Lords' Supper each Sunday for all Christians to share. This is done to provide an opportunity to obey Christ to commune "in remembrance" of His death on the cross. Use this quiet time to draw close to the sacrificial Savior. Emblems will be passed during the service or prepackaged units can be picked up at the table in the foyer.

**Decision and Dedication** - Times for public responses to God are included in our worship. If you believe that Jesus is the Son of God, has the power to be your Savior, and has the right to be your Lord, this is an invitation for you to come to the front at the invitation song to announce your belief publicly and to accept Christ by immersion in water (baptism). If you are an

immersed believer in Jesus, and desire to be an active member of this body of believers, then come to affirm your faith publicly and express that desire. Responses for rededication and prayer are also encouraged by coming to the front at the invitation song.

If you would like further information about either of these decisions, feel free to schedule an appointment with one of our staff members. Individuals may make these decisions throughout the week and need not take place in the worship service.

*If you need additional information or assistance, please ask an usher or greeter. They are here to assist you.*

## Ripley Church of Christ

9:00 am Sunday School

10:15 am Worship

Ph. 330-567-2320

[www.ripleycoc.com](http://www.ripleycoc.com)

For more detailed information about our church, service opportunities or ministries, stop by our welcome center or visit us on the web. You'll find access to sermons, resources, calendar, and more.



March 23, 2025

**Tom Benter**  
Senior Minister  
**Mike South**  
Student Minister  
**Keri Tipton**  
Office Manager

**Jeremiah Stivers**  
Associate Minister  
**Ariel Stivers**  
Children's Ministry Coordinator  
**Tracy Deeken**  
Custodian

# Message Notes

## Wait for God's Timing

Nehemiah 2:1-10

It's easy to be impatient and rush. To wait takes faith and trust. It takes control out of our hands and places it into God's hands.

When Nehemiah learned that Jerusalem's walls had still not been rebuilt, he felt a concern over his people. Prayer was a priority for God's leader as he asked for God's direction and call. He responded in God's timing.

### I. S\_\_\_\_\_ to God's T\_\_\_\_\_ -Neh 2:1; Prv 21; 19:2

- He felt the call but he didn't jump right in, he spent a long period in p\_\_\_\_\_.
- It's not good to have z\_\_\_\_\_ without k\_\_\_\_\_ or be \_\_\_\_\_ and miss the way.

### II. F\_\_\_\_\_ in the D\_\_\_\_\_ R\_\_\_\_\_ -Neh 2:1; Mat 6:16-18

- A good leader learns how to f\_\_\_\_\_.
- A test if a person is developing as a l\_\_\_\_\_ is how well they're doing as a f\_\_\_\_\_.

### III. H\_\_\_\_\_ About P\_\_\_\_\_ W\_\_\_\_\_ -Neh 2:2

- A good leader is t\_\_\_\_\_ about their w\_\_\_\_\_.

### IV. Take A\_\_\_\_\_ of the O\_\_\_\_\_ -Neh 2:3-5

- Faces his f\_\_\_\_\_
- C\_\_\_\_\_ c\_\_\_\_\_ his desire
- One quality of every effective leader is the ability to communicate clearly a v\_\_\_\_\_.
- There comes a time when you have to make a d\_\_\_\_\_.

### V. Plan for F\_\_\_\_\_ the V\_\_\_\_\_ -Neh 2:6-8

- He not only p\_\_\_\_\_ but he p\_\_\_\_\_.

*We can make our plans, but the Lord determines our steps.*  
-Prv 16:9

- But they go h\_\_\_\_\_ in h\_\_\_\_\_.
- Faith breeds o\_\_\_\_\_.

### VI. P\_\_\_\_\_ with the P\_\_\_\_\_ Even if there is C\_\_\_\_\_ -Neh 2:10

- There's going to be somebody who rises up and say's \_\_\_\_\_.
- When you seek to lead and walk by f\_\_\_\_\_ you'll invariably encounter those who walk by s\_\_\_\_\_.

### CONCLUSION:

It is good to wait on the Lord. But there's one thing for which God doesn't want you to wait. And that is to respond to His call of salvation.

## This Week

Today:	9:00a	Sunday School/Adult Bible Fellowship
	10:15a	Worship
		Jesus' Farm & rEVOLve Children's Program
	6:00p	Launch Youth Group
		Ladies' Bible Study
Mon:	6:00p	Busy Ladies' Bible Study
Tues:	9:00a	Ladies' Bible Study with Sandy Smith
	6:00p	American Heritage Girls Meeting
Wed:	7:00p	Men's Bible Study
	7:00p	Faithful Fasting Friends
Thurs:	6:30p	Mixed Small Group Adult Bible Study

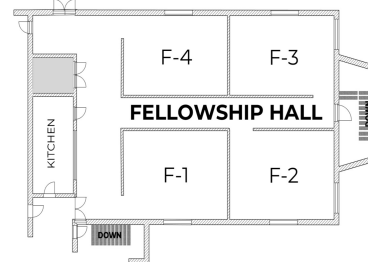
### ABF Classes / Locations

#### 9:00a

Adult Study: *John's Letters* F3  
Youth Sunday School: Basement  
Women's Class; Conf. Room  
College / Young Adults: Choir Room

#### 6:00 p

Ladies' Bible Study: Conf Rm



March 9	Giving \$ 7,935.26	Budget \$8,563.00
March 16	Giving \$ 7,561.21	Budget \$8,563.00

## Events / Misc

**Cookie Donations for Spring Retreat**—We are asking for donations of homemade cookies for the Middle and High School Spring Retreat. Sign up at the Connection Center. Cookies need to be dropped off in the Fellowship Hall by 12p, April 4th.

**The Table @ Broken Grounds in Millersburg—Thursday, April 3, 5:30p** Help provide a free meal to the community. Sign up for various food items to donate at the Connection Center. Drop off food by 2pm at RCC Thursday, April 3rd in the Fellowship Hall. Or, food may be brought to Broken Grounds by 5p. Any questions, contact Melissa Muzic 740-310-0690.

### Seniors' Day at the Lake at Round Lake—Tuesday, April 8



Campers 55+ are invited to this one-day retreat to enjoy food, faith, and fellowship. The Theme this year is "Prayer That Works." Jim Borton (First Christian Church in New Philadelphia)

will be serving as dean with Dave Mason (Heath Church of Church) assisting. For more information or to register, visit [roundlake.org/event/seniors-day-lake](http://roundlake.org/event/seniors-day-lake).

**Good Friday Service at Round Lake— April 18, 6pm** Join us for a combined worship service with Nashville, Millersburg, and Parkview Churches of Christ in the Multipurpose building on the retreat side of Round Lake.

**Easter Services at RCC—April 20, 8am & 10:15am.** Breakfast will be served between services from 9am-10am. Both services will be identical. Children's programs will be available for both services. No Adult Sunday School.

\* \* \* \* \*

**Use of RCC FACILITIES**— Must be scheduled through the Church Office. It is the responsibility of everyone using the facilities to clean up and secure ALL areas used by participants / children (Including Jesus' Farm). A check-list and instructions are available when you complete a **Building Use Form** (Forms are available outside the Secretary's Office. Place completed forms in the box outside the Secretary's Office.)

**Study Session 3:**

# NEHEMIAH

**Wait for God's Timing  
Nehemiah 2:1-10**

1. Who "first" broke your heart? How long did it take for your heart to heal? Where did you find comfort?
2. What would you do with a leave of absence from work?

**DIG:**

1. In these intervening three months, what do you think Nehemiah has been doing? What does King Artaxerxes notice and why? Why has it taken so long for Nehemiah to express his grief?
2. What does he request the king to do? What three questions does the king have?
3. In Nehemiah's ready response, what do you see that demonstrates his practical wisdom? His dependence on God? On human resources? His respect for his superior?
4. What obstacle to his success looms on the horizon? Why?

**REFLECT:**

1. Can others read what you are thinking or feeling, almost like an open book? Or is your heart under lock and key? Why is that?
2. If someone could read what you feel right now, what would they see?
3. How can you make your needs known to your 'King'?