

FOR OUR GUESTS

We are glad you chose to worship with us today! We want to make your experience with us as easy and enjoyable as possible. The following information will help you to know what to expect today.

Please take advantage of our children's programs:

Nursery (ages 0 through 2 yrs.)

A staffed, teaching nursery is located out the auditorium doors to the right.

Jesus' Farm (Ages *3 yrs. - K)

Jesus Farm is our pre-school program, offered during both hours, to help children know that God loves & cares for us. Every activity is geared to the child's learning level. It is located out the auditorium doors to the left. Your child may be checked in at the wagon. (*potty trained)

rEVOLVe (Grades 1 - 5)

rEVOLVe is our elementary-age program located in the lower level of the fellowship hall. Bring your child down at 9:00 for Sunday School. Children experience a time of worship & an environment to develop a relationship with Jesus Christ through different activities.

The Offering - It is a privilege to give back to God a portion of the material blessings He has given us. Offering boxes are located on the walls at the back of the auditorium, you can give online @ ripleycoc.com, or when the plates are passed.

Communion - We choose to offer the Lords' Supper each Sunday for all Christians to share. This is done to provide an opportunity to obey Christ to commune "in remembrance" of His death on the cross. Use this quiet time to draw close to the sacrificial Savior. Emblems will be passed during the service or prepackaged units can be picked up at the table in the foyer.

Decision and Dedication - Times for public responses to God are included in our worship. If you believe that Jesus is the Son of God, has the power to be your Savior, and has the right to be your Lord, this is an invitation for you to come to the front at the invitation song to announce your belief publicly and to accept Christ by immersion in water (baptism). If you are an

immersed believer in Jesus, and desire to be an active member of this body of believers, then come to affirm your faith publicly and express that desire. Responses for rededication and prayer are also encouraged by coming to the front at the invitation song.

If you would like further information about either of these decisions, feel free to schedule an appointment with one of our staff members. Individuals may make these decisions throughout the week and need not take place in the worship service.

If you need additional information or assistance, please ask an usher or greeter. They are here to assist you.

Ripley Church of Christ

9:00 am Sunday School

10:15 am Worship

Ph. 330-567-2320

www.ripleycoc.com

For more detailed information about our church, service opportunities or ministries, stop by our welcome center or visit us on the web. You'll find access to sermons, resources, calendar, and more.



*For the word of God is alive and active.
Sharper than any double-edged sword, it penetrates even to
dividing soul and spirit, joints and marrow; it judges the
thoughts and attitudes of the heart.*

—Hebrews 4:12

There is power in scripture. Certain passages have penetrated your heart, soul, and spirit. In this series, we are examining passage favorites that have impacted your life.

What is your life Impacting Passage?

September 29, 2024

Tom Benter
Senior Minister
Mike South
Student Minister
Keri Tipton
Office Manager

Jeremiah Stivers
Associate Minister
Ariel Stivers
Children's Ministry Coordinator
Tracy Deeken
Custodian

Message Notes

Impacting Passages 5

James 1:5

There's never been a time in our lifetimes where we needed wisdom more than right now. And that need is increasing exponentially every single day.

Don't turn your back on wisdom, for she will protect you. Love her, and she will guard you. - Proverbs 4:6

If any of you lacks wisdom, you should ask God, who gives generously to all without finding fault, and it will be given to you. - James 1:5 (NIV)

When is the last time you've prayed for wisdom?

1. W_____ is Wisdom?

Wisdom - _____

But the wisdom from above is first of all pure. It is also peace loving, gentle at all times, and willing to yield to others. It is full of mercy and the fruit of good deeds. It shows no favoritism and is always sincere. And those who are peacemakers will plant seeds of peace and reap a harvest of righteousness. - James 3:17-18

2. How do I g_____ wisdom? James 1:5; 1 Kings 3:10

- We _____ God for it and God is _____.

3. How do I d_____ wisdom?

If you are wise and understand God's ways, prove it by living an honorable life, doing good works with the humility that comes from wisdom. - James 3:13

... prove it by ...

- _____
- _____
- _____

'A true believer is someone who makes it easy for others to believe in Jesus.' - Ruth Graham

Boldness without h_____ produces a b_____.

2025 Leadership Recommendation Guidelines— September is the month members can recommend names of individuals to serve as Elder / Deacon. Individuals will be reviewed for selection by the Elders and a list presented to the congregation prior to the November Congregational Meeting (11/17). *Please review the guidelines (packet located at the Connection Center) prior to submitting a name.*



Parenting Discipleship Workshop—Sundays October 6-27, 9AM This 4-week workshop is designed for parents/grandparents with children from birth-High School. Our goal is that you would come away from this with tools and resources to help you feel confident and encouraged as you strengthen your skills in discipleship. Sign up at the Connection Center. See Ariel Stivers or Mike South for more details.

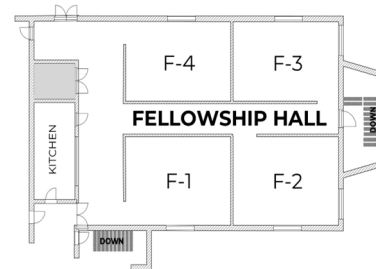
This Week

Today: 9:00a Sunday School/Adult Bible Fellowship
10:15a Worship
Jesus' Farm & rEVOLVe Children's Program
12:00p Rooted/Launch Bingo and lunch
6:00p Women's Bible Study
Mon: 6:00p Missions Meeting
Tues: 9:30p Ladies Bible Study
4:30p Elders' Meeting
6:30p AHG Meeting
Wed: 7:00p Men's Bible Study
Thurs: 6:30p Mixed Small Group Adult Bible Study

ABF Classes / Locations 9:00a

Adult Study: King David F3
Youth Sunday School: Basement
Women's Class, Conf. Room
College / Young Adults: Choir Room

6:00 p
Ladies' Bible Study: Conf Rm



Members—Regular Attenders—Guests: Please complete a **Connect Card**, located on the back of the pews, and deposit in the offering plates each Sunday.

Sept 22 Giving \$ 7,334.29 Budget \$8,563.00

Events / Misc

Rooted & Launch Ministries Lunch & Bingo— TODAY Immediately following service. Lunch provided.

Men's Group Fall Study— Begins October 2, 7p "Wild at Heart" by John Eldridge. All men are invited. Any questions, contact Gary Cline 330.201.1067

Faithful Fasting Friends— Begins October 2, 7p All ladies are welcome. Learn about women in Scripture whose lives have inspired generations of women in their faith and devotion to God. Learn more about a healthy, fasting lifestyle. Any questions contact Marla Tipton 330.347.1025.

Seniors' Day at the Lake— October 8 Age 55+ can join us at Round Lake for day of fellowship, learning, and food. The van will leave the church at 9am (or meet at Round Lake at 9:30am). Sign up for this event at the Connection Center.

Chili/Soup Cook-Off— October 13 Immediately following service. Prizes for best chili and best soup! Please bring either a chili, soup, or dessert to share. Sign up at the Connection Center.



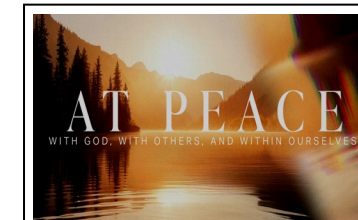
2024 College Tour Road Trip— October 17-19 Open to all high school students. Register by September 29th. Contact Mike South 251.644.0498 / mike.south@ripleycoc.com.



Fall Fest— October 27 5:30p-7:30p Join us for fun science themed activities and Tunk or Treat. Sign up at the Connection Center if you plan to decorate a vehicle for trunk or treat.



Holmes County Home Auction— Special thanks to those who donated pies. It was very much appreciated.



October Sermon Series At Peace
With God, with Others, and within Ourselves