

FOR OUR GUESTS

We are glad you chose to worship with us today! We want to make your experience with us as easy and enjoyable as possible. The following information will help you to know what to expect today.

Please take advantage of our children's programs:

Nursery (ages 0 through 2 yrs.)

A staffed, teaching nursery is located out the auditorium doors to the right.

Jesus' Farm (Ages *3 yrs. - K)

Jesus Farm is our pre-school program, offered during both hours, to help children know that God loves & cares for us. Every activity is geared to the child's learning level. It is located out the auditorium doors to the left. Your child may be checked in at the wagon. (*potty trained)

rEVOLVe (Grades 1 - 5)

rEVOLVe is our elementary-age program located in the lower level of the fellowship hall. Bring your child down at 9:00 for Sunday School. Children experience a time of worship & an environment to develop a relationship with Jesus Christ through different activities.

The Offering - It is a privilege to give back to God a portion of the material blessings He has given us. An offering box is located outside the auditorium near the Connection Center, you can give online @ ripleycoc.com, or when the plates are passed.

Communion - We choose to offer the Lords' Supper each Sunday for all Christians to share. This is done to provide an opportunity to obey Christ to commune "in remembrance" of His death on the cross. Use this quiet time to draw close to the sacrificial Savior. Emblems will be passed during the service or prepackaged units can be picked up at the table in the foyer.

Decision and Dedication - Times for public responses to God are included in our worship. If you believe that Jesus is the Son of God, has the power to be your Savior, and has the right to be your Lord, this is an invitation for you to come to the front at the invitation song to announce your belief publicly and to accept Christ by immersion in water (baptism). If you are an

immersed believer in Jesus, and desire to be an active member of this body of believers, then come to affirm your faith publicly and express that desire. Responses for rededication and prayer are also encouraged by coming to the front at the invitation song.

If you would like further information about either of these decisions, feel free to schedule an appointment with one of our staff members. Individuals may make these decisions throughout the week and need not take place in the worship service.

If you need additional information or assistance, please ask an usher or greeter. They are here to assist you.



Ripley Church of Christ

9:00 am Sunday School

10:15 am Worship

Ph. 330-567-2320 www.ripleycoc.com

For more detailed information about our church, service opportunities or ministries, stop by our welcome center or visit us on the web. You'll find access to sermons, resources, calendar, and more.



This series is not about having a better marriage so much as it is about having a biblical marriage. Because if we have a BIBLICAL marriage it'll be BETTER!

October 5, 2025

Tom Benter
Senior Minister
Mike South
Student Minister
Keri Tipton
Office Manager

Jeremiah Stivers
Associate Minister
Ariel Stivers
Children's Ministry Coordinator
Tracy Deeken
Custodian

Message Notes

Fit To Be Tied
Part 5

TEXT: Ezekiel 33:6, Genesis 1-2, 1 Corinthians 6:9-10

... if the watchman sees the enemy coming and doesn't sound the alarm to warn the people, he is responsible for their captivity. They will die in their sins, but I will hold the watchman responsible for their deaths.' – Ezekiel 33:6

Challenge: _____

- OBSERVATION – Genesis 1-2
- God _____ us. 1:26-27
 - God gave us a _____ 1:26, 28
 - God established _____ 2:24-25
 - Marriage is _____ 2:24

- SITUATION
- 1960's - _____
 - 1970's - _____
 - 1980's - _____
 - 1990's - _____
 - 2000's - _____

- APPLICATION – 1 Corinthians 6:9-10
- _____ does not make it _____
 - We're in a battle — and _____.
 - God _____ all people — not their _____

- RESPONSE
- Hold on to the _____
Woe to those who call evil good and good evil. – Isa 5:20
 - See each individual _____
 - Provide _____ for _____ to experience God's love.

"We're all either helping people toward God or away from Him." – C.S.Lewis

God wants to take poor, lost, searching people and save them. It might be homosexuality, hatred, gossip, greed, pride, lying, stealing, etc., God has an eye for us all.



The Giving Tree

RCC is partnering with Love INC to benefit the families of Holmes County. Throughout October, the foyer will house a Christmas tree with removable paper tags asking for supplies to donate to Love INC. These items are used for the various events and classes Love INC provides for the families of Holmes County. Please visit the Giving Tree, take a tag (or tags) and bring the items you have chosen back to the Giving Tree and place them in the bin along with the tag. Do not want to shop? Scan the QR code to donate online. The last day to donate is October 26th.**Because of our partnership with Holmes County Love INC, Wayne County residents have access to programs offered though their county as well.*

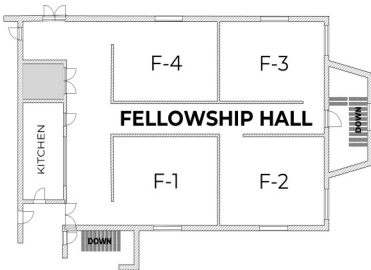


This Week

- Today: 9:00a Sunday School/Adult Bible Fellowship
10:15a Worship
Jesus' Farm & rEVOLve Children's Programs
6:00p Launch Youth Group
6:00p Women's Bible Study
- Mon: 6:00p Missions' Meeting
- Tues: 6:30p American Heritage Girls
- Wed: 7:00p Men's Bible Study
7:00p Faithful Fasting Friends
- Thurs: 6:30p Mixed Small Group Adult Bible Study

ABF Classes / Locations

- 9:00a
Adult Study: *I Am* F3
Youth Sunday School: Basement
Women's Class; Conf. Room
College / Young Adults: Choir Room
- 6:00 p
Ladies' Bible Study: Conf Rm



Members—Regular Attenders—Guests: Complete a **Connect Card**, located on the back of the pews, and deposit in the offering plates each Sunday.

Sept 28	Giving \$10,042.32	Budget \$8,563.00
---------	--------------------	-------------------

Events / Misc

October is Clergy / Pastor Appreciation Month! Please stop by the table in the hallway by the Fellowship Hall to write our staff a note. Let's "fill their cups" with words of encouragement and gratitude for all that they do for our church and community.



Ladies' Fellowship—October 13, 6p Fellowship Hall. We are collecting Cola (diet and regular) and Little Debbie snacks for Veterans in a local nursing home. We are also making blankets. Donations can be placed in the "Ladies' Fellowship" cabinet in the Connection Center. Any questions, contact Marsha Jones 330-231-5128.

Fall Church Work Day—October 18, 8:30a Join us cleaning up our property for the Fall season. All are welcome. Bring rakes, shovels, gloves and wheelbarrows. Rain date is October 25.

Women's Card-Making Event—October 19, immediately following services. Join us for a time of fellowship, food, and service. Meat and drinks are provided. Please bring a side dish or dessert to share. Any questions, contact Melissa Muzic 740-310-0690.

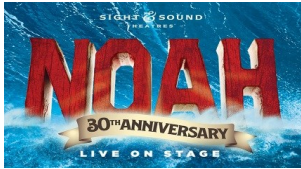
FALL Festival

OCT 26 6PM

Food Truck—Hay Ride Trunk or Treat—Games

October 26 6:00p

**To volunteer for games or Trunk or Treat, sign up in the workroom across from the nursery.*



Sight & Sound Theater; Noah—Adult Trip December 1-2 7 remaining tickets and hotel reservations. Specific information and sign up is available at the Connection Center counter. **THIS TRIP IS OPEN TO ANY AGE ADULT.**